

Kaikoura earthquake update

WEEKLY BULLETIN

30 January 2017

In this issue

OUR FOCUS

INTERESTING NUMBERS

PROGRESS IN THE NORTH

SH1 SOUTH

INLAND ROAD

ALTERNATE SH1 ROUTE

RAIL NETWORK

INLAND HARBOUR

KEEP UPDATED

This weekly bulletin is to give you the latest update on works happening to assist the recovery of road and rail routes damaged by the Hurunui/Kaikoura earthquakes in November 2016.

The bulletin is provided by the North Canterbury Transport Infrastructure Recovery – an alliance representing NZ Transport Agency and KiwiRail, on behalf of Government.

OUR FOCUS

Restoring full access on the transport corridor north of Kaikoura will be a huge job that will take some time to complete.

The scale and the complexity of the slips on the road and rail corridor are unprecedented in New Zealand, and the task ahead of us is huge, but the North Canterbury Transport Infrastructure Recovery (NCTIR) alliance is aiming to have the transport corridor north of Kaikoura fully open by the end of 2017. Restoring full access on State Highway 1 north of Kaikoura will be a huge job that will take some time to complete.

The scale and the complexity of the slips on State Highway 1 are unprecedented in New Zealand, and the task ahead of us is huge, but the North Canterbury Transport Infrastructure Recovery (NCTIR) alliance is aiming to have SH1 north of Kaikoura fully open by the end of 2017. NCTIR is still working through the design options and construction methodology to clear several massive slips safely and efficiently. Until that work has been completed it's too soon to provide a detailed timeline, but we are confident that that some access on parts the route can be restored well before the end of the year.

Our focus for the emergency response and recovery has been to:

- Establish access to Kaikoura via SH1 south and Inland Road (Route 70) to reconnect the Kaikoura community and enable Kaikoura to reopen as a tourist destination.
- Strengthen the roading infrastructure on the SH1 alternate route (via Lewis Pass) to cope with the extra traffic and to improve safety and journey time for customers.
- Re-connect the road and rail links from Kaikoura to Picton which provide critical transport routes for freight and tourism industries to Kaikoura as well as vital access for many local communities positioned between Christchurch and Picton.
- Reinststate a safe functioning Kaikoura harbour. The harbour provides for the tourism and fishery industries, which is critical to the Kaikoura community and its people.



INTERESTING NUMBERS

700

sites are damaged on the Main North Rail Line, including tracks, slopes, embankments, tunnels, bridges, culverts and communications systems.

200

SH1 sites are damaged between Cheviot and Clarence. These include slips, bridges, road damage, embankments, tunnels, culverts and road safety barriers and signage.

26

slips still need further repair south of Kaikoura. Although SH1 south is opened it still remains fragile.

PROGRESS IN THE NORTH

There are nine major slips that have caused extensive damage to the road and rail. As the slips at Oahu Point and the one immediate north will take the longest to clear, our plan to get the road and rail open as quickly as possible includes:

- Investigate each slip and determine the safest and fastest way past each slip.
- Establish construction access roads by working from both ends (north and south) to reach the slips at Ohau Point.
- At the same time, design the road and rail alignments for each specific slip site.
- Establishing interim access to the public
- Construct a final solution that is safe and reliable for all road and rail users.

Progress this week:

- More than a hundred people have been working on the State Highway 1 repairs including a team of 40 designers who are planning what sections of State Highway 1 need to be replaced. Due to the size of the project, the team will continue to grow.
- The current works have focused on investigating the damage and making assessments of the slips to determine the best way to remove the slip material, or use the material to provide a better road and rail alignment.
- Up to nine helicopters have been sluicing slips, dropping a million litres of water daily from monsoon buckets every day. This has washed tonnes of material down the side of the slip allowing our engineers to understand the material and the best way to clear the slips and to restore the road and rail.
- Tourists and locals wanting to see the damage have been asked to stay clear for their own safety. The sluicing works is causing rocks, trees and other debris to regularly move down the hillsides.
- Our construction crews have created construction access around the two most northern slips and the two most southern slips and have carried out road repairs as they progress to Ohau Point.
- Due to good progress on clearing slips and repairing the road five campervans and a house bus stranded at Paparoa Point were rescued by their owners and driven back to Christchurch and Timaru.
- We are designing the best solution to clear the slips safely and quickly and to minimise our impact on this beautiful coast line. We are also looking at ways we can enhance safety, reliability and amenities on this route to provide better safety, reliability and tourism outcomes.



SH1 SOUTH

State Highway 1 (South of Kaikoura) remains fragile. For safety reasons travel on SH1 is restricted to daytime hours only (6am to 8pm) until all of the slip faces have been stabilised and there is a reduced risk of rock fall. The route remains subject to closure in the event of severe weather or further slip falls.

Progress this week:

- Our crews continue to stabilise the slips to ensure the route remains open and safe for the community to use.
- The route was closed while crews removed large boulders from above and on the rail line. This work helps the stabilisation of the slip area and we noted that later in the week during heavy rain, the route was able to stay open.
- There are crews working in the Hundalees that are focused on making that route safe and smooth which will improve the travel experience particularly for buses of tourists who are coming to Kaikoura.



INLAND ROAD

Inland Road (Route 70) is now open 24/7 and remains a critical link for the Kaikoura community as SH1 south is closed during darkness for safety reasons.

Progress this week:

- Crews have been busy carrying out repairs to the road and eliminating rock fall hazard areas such as the 'Whales Back' to ensure it remains open.
- Resurfacing work is planned to take place across several sections of the road to ensure the road doesn't deteriorate during wet weather.
- Planning work is underway to replace the Wattle Bridge, which is closed due to significant damage. A temporary bridge is in place but a new bridge will be built under the repair programme.

ALTERNATE SH1 ROUTE

Our focus has been on strengthening the road infrastructure on the alternate route (via Lewis Pass) to cope with the extra traffic and to improve the safety and journey time for customers. We've been encouraged by the good behaviour of the drivers who are for most part, driving safely and sensibly.

Progress this week:

- Works have been identified that will improve safety and reliability and have been prioritised to ensure the more important projects are done first.
- Crews are carrying out a range of projects including strengthening and widening sections of the road, improving safety barriers and sections of the road that have deteriorated from the increased volume of heavy traffic.
- Traffic lights were installed this week at Maruia Bridge 7km, North of Springs Junction. This signals will assist drivers and improve journey time by managing traffic flows across the single lane bridge.
- A rock fall protection system will soon be constructed at the Waiiau Ferry Bluffs on State Highway 7a to ensure the state highway remains clear of obstacles and able to remain open.

RAIL NETWORK

The main north line is critical network for moving freight between Picton and Christchurch. Like the road network, NCTIR is still working through the design options and construction methodology to clear the slips safely and efficiently and to repair damaged structures and rails.

Progress this week:

- The KiwiRail bridge at Ferniehurst is badly damaged and needs to be replaced. A lighter temporary bridge is being installed before a more permanent new bridge is built so rail crews can access the rest of the track and complete repairs further down on other parts of the rail network.
- Track work crews are continuing to repair the rail line north of Spotswood.

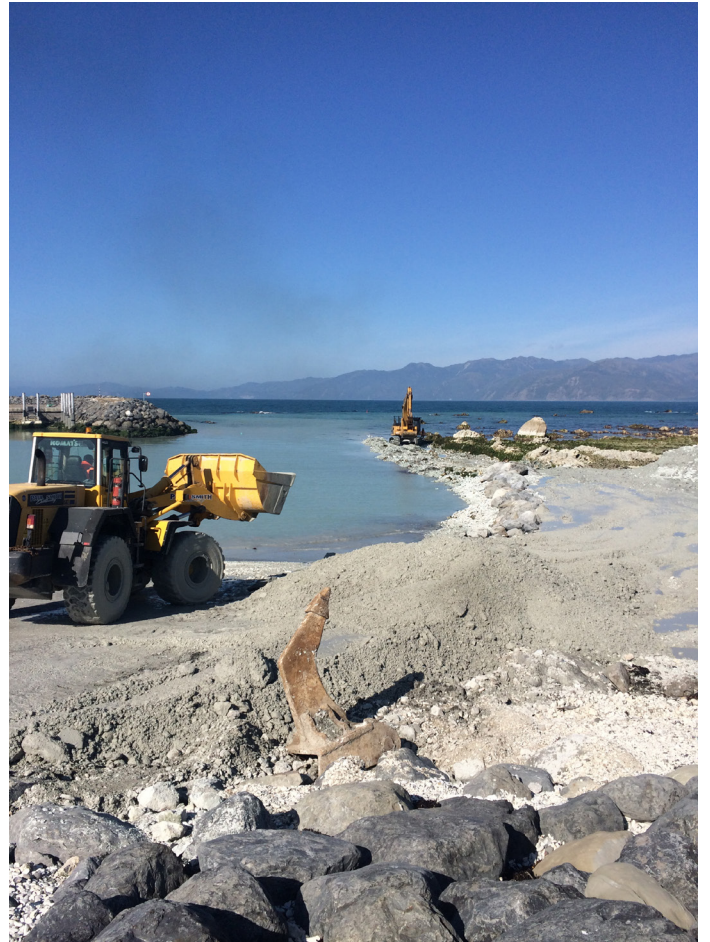


KAIKOURA HARBOUR

Our focus has been to reinstate a safe functioning Kaikoura harbour. The harbour provides for the tourism and fishery industries, which is critical to the Kaikōura community and its people.

Progress this week:

- Dredging of the main channel and lowering of the sea bed floor continues to enable boats to use the boat ramp and harbour at all tides.



KEEP UP TO DATE

Please email info@nctir.com to be added to the mailing list for regular progress updates.

CONTACT



North Canterbury Transport Infrastructure Recovery
205 Annex Rd, Middleton, Christchurch 8024
E info@nctir.com