

Meeting Notes of the Sounds Advisory Group, held at the Committee Room at Marlborough District Council on Monday 12 September 2016 at 9.00 am

Present: Clr Trevor Hook (Chairperson), Clr Barsanti, Clr Oddie, Eric Jorgensen, Judy Hellstrom, Monyeen Wedge, Rachel Drake, Rob Schuckard, Ross Withell, Tim Greenhough, Vic Koller, Dave Hayes, Linda Booth, Ian Mitchell, Ken Roush, Debbie Stone, Clr Jerram (arrived 9.15 am)

Guests: **Jonathan Large (Marine Farming Association) and Brendon Burns (Communications Consultant, Brendon Burns & Associates)**

MDC Staff: Alan Johnson, Steve Urlich, Pere Hawes, Nicky Eade

In Attendance: Rebecca Waldron and Yvette Johnson (MDC Secretaries)

Welcome

Trevor welcomed everyone to the meeting and thanked them for their attendance.

1. Apologies

Poneke Rene, Kristen Gerard, Graeme Coates

Action Points from Previous Meeting

Action	Responsibility
Judy to email Alan with the issues regarding the paper road at Endeavour Inlet. Alan will then follow this up with Tony Quirk at Council.	Judy Hellstrom
Nicky and Alan to work on forestry restoration.	Alan Johnson
Completed	
Alan and DOC to talk to Joe about pig control options on Arapawa Island.	Alan Johnson
Completed	
Cruising Guide will be highlighted at the next Regional Planning and Development meeting, how appreciative the Sounds Advisory Group is to have this work done and congratulate those involved.	Trevor Hook
Achieved	
Ratepayers pay \$10 per year on their rates demand to the Picton Regional Forum. This group is not listed on the Council website with regard to what they do or their Terms of Reference.	Alan Johnson
Completed	

2. Aquaculture Review

Update by Pere Hawes

- Pere distributed a report that went before Council on 15 July 2016. (see attached report). He then outlined the main points:
 - The Marlborough Environment Plan (PMEP) was notified on 9 June 2016. It was decided not to notify the marine farming provisions at that time and to continue the review process on aquaculture. The Council wants industry and the community to engage with each other to obtain the other's perspective.
 - There was a workshop in July to decide the process to be used to continue the review. From this came a proposal to establish a working group.

Council have adopted the recommendations of the report. A working group is to be established which will have members of the industry, Marlborough Sounds community representatives, DOC and MPI. Iwi are to be separately approached to establish how they would like to be involved in the review.
 - The various parties will now be approached to establish their willingness to be involved in the working group.
 - Memberships suggested a representative from the Marine Farming Association, Aquaculture NZ, the two largest Marine Farms, two from SAG, one from Marlborough Sounds Integrated Management Trust, Central Sounds/Kenepuru Residents Association, MPI, DOC and Iwi.
 - Council is currently collating all the information it holds on the Marlborough Sounds to help with the task. There may be other parties that hold useful information for the process.
 - The Council is guided by the New Zealand Coastal Policy Statement which requires Council to identify areas appropriate for aquaculture.
 - It is proposed that this task be approached systematically, working through the Sounds on a "bay by bay" basis.

Questions/Answers

- What is the timeframe for this process?
 - There has been no timeframe put on the process. It would be desirable to have it completed at the same time as the National Direction for Aquaculture - which is due for release the middle of next year. However as the working group will need to develop a consulting process for those directly affected in each bay, it may end up taking longer.
 - The outcome will be the ability to notify a variation to the notified plan, that would insert the aquaculture provisions, and identify the areas appropriate for aquaculture by way of mapping. (This might be able to be released bay by bay).
- Due to the large numbers in the working group does Pere see it as more of a governance group?
 - The working group's role will be to oversee the review and provide Council with a recommendation. There will be technical support available to the group in the form of a Technical Advisory Group.
- Is it anticipated to have this completed before the expiration of the marine farm licences?
 - Yes.

- Is there a contrast between MDC's obligation to find space for aquaculture and the right to develop, and the difficulties with finding new space?
 - The current plan identifies areas that are inappropriate for aquaculture. The review switches this to identifying areas that are appropriate. Whatever comes from this process will still have to go through a separate public process.
- The new working group will begin next month, nominations were asked for from the representatives from the Sounds Advisory Group. This position will possibly be recompensed for their time (not ratified).
- It was suggested that somebody from the community who is an expert on shellfish be included in the working group. It was pointed out that technical advice is available and that a broad view is more valuable than a specialised one.

Recommendation:

It was decided to take nominations for the positions to and revisit the list at a later date:

Nominations:

- Rob Schuckard
- Judy Hellstrom (tentative)
- Ken Roush
- Cllr Graeme Barsanti ✱
- Cllr Peter Jerram ✱ (tentative due to other commitments)

✱ Alan Johnson noted that the Councillors will not be standing in the next local government election and will not be members of the Sounds Action Group.

When there is more information available about the process and the time commitment - the people on the list will be approached to find two members for the advisory group.

There was discussion on the technicalities of approaching Marlborough Marine Futures or the Integrated Management Trust. Eric is going to consider who to invite should go to and report back to Council by 20 September 2016.

3. King Salmon Process

- There are constraints on what can be made public. It was decided to make this report public excluded.

Recommendation: To make the King Salmon Report public excluded.

Moved by Ian Mitchell – Seconded by Tim Greenhough - Carried

- Trevor thanked Eric, Judy and Rob on behalf of the group for their involvement in the King Salmon Group.
- Ross thanked Steve and Pere for their involvement.

4. Smart and Connected Aquaculture Update – Brendon Burns

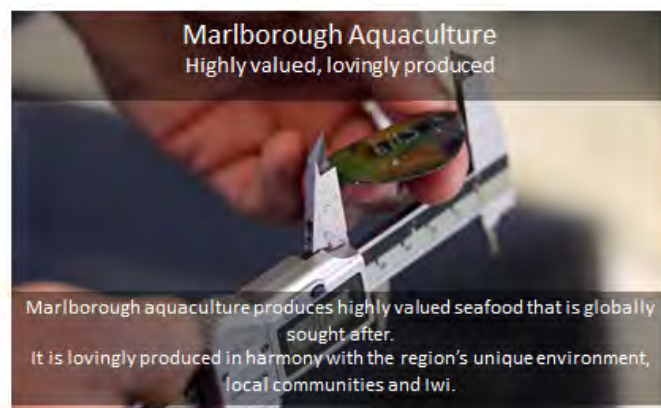
- Brendon Burns the Chair of Smart and Connected Aquaculture introduced himself and the new President of the Marine Farms Association, Jonathan Large. He acknowledged Debbie Stone for all the extra work she has been doing since Graeme Coates became unwell and updated the group on Graeme's recovery which is progressing well.
- Brendon emphasised the relationship between wine and seafood.
- He pointed out that there has been approximately 10 hectares of new development in aquaculture per year for the past 13-14 years.
- The vision for aquaculture in Marlborough is that it should be a highly valued industry.
- He presented a PowerPoint from the Marine Farming Association which is summarised below:

Getting the facts out there



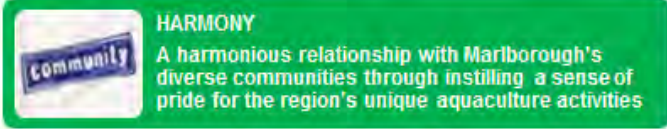
1. The NZIER report shows Marlborough produces more than 60 % of the nation's mussels and salmon and exports worth more than \$275m (2014)
2. We generate \$162m in regional GDP, nearly 6 percent of the region's economic activity
3. Around 860 direct jobs result, paid at far higher than prevailing average wages.
4. Since 2002, only 9 new marine farms covering (6 mussel and 3 salmon) were consented in the Marlborough Sounds
5. In that 13 years the total new area consented (new farms and extensions minus farm space not renewed) was 131.9 hectares.
6. If half the current marine farms were lost due to any factor, over 25 years Marlborough would lose nearly \$400m in GDP and nationally the cost would be \$1.33b

Vision Confirmed



15/05/2016 Page 4

- There have been three work streams developed:
 - **Harmony Group** - which had its first meeting on 2 September 2016.



HARMONY
A harmonious relationship with Marlborough's diverse communities through instilling a sense of pride for the region's unique aquaculture activities

Proposed working group

Eric Jorgenson, chair, Mark Gillard, Havelock Community Association representative, Jonathon Large, Vern Harris, Graeme Coates, Brendon Burns

Required actions:

- Develop a high level value proposition for the engagement project focused on building community and harmony. Include the different stakeholder segments requiring engagement – who, why, their values, focus on positives first. Use the MFA's Social License paper to help inform.
 - Align with Marlborough Marine Futures and other relevant organisations to promote collaboration
 - Gain MPI, MDC and MFA support for the engagement proposal. Ensure sufficient time available for carrying out project so the outcomes can inform other work streams, in particular the Government's.
 - Carry out engagement with the individual stakeholder groups identified for the project.
 - Bring the different stakeholder groups together in a forum aimed at achieving shared values/goals and strengthening harmony.
 - Use outcomes of forum to help create a more supportive regulatory environment
- **Regional Innovation Strategy** - will have its first meeting on 7 September 2016.



VALUE AND INNOVATION
A price maker through innovation in production, product development and advanced marketing activities

Proposed working group

Zane Charman, Chair, Mike Mandeno, Gemma McGowan or Mark Gillard, Serean Adams, Danette Olsen, Bruce Cardwell, John Patterson MRC, Jane Tito MDC, Wine industry representative TBC

Required actions:

- Establish a representative working group for this project.
 - Develop a proposal for a regional innovation strategy including: Identification of high value consumers and what they want.
 - Define opportunities for environmental/sustainability innovation.
 - Develop focus for product development and R&D focus.
 - Integration of aquaculture with the Marlborough Story.
 - Closer collaboration with the wine and tourism sectors.
 - Clarify alignment with the Marlborough Research Centre.
 - Secure seed funding – target regional development opportunities.
 - Develop and implement strategy.
- **Regulatory** - given aquaculture has been taken out of the new proposed Marlborough Environment Plan and there's a lot of other activity in the regulatory space, this group has not yet formed at this point.



Questions/Answers

- It was suggested that the Aquaculture Industry does not have the same mana in the community that is afforded to the wine industry and Smart and Connected Aquaculture was asked to look at addressing this issue in the communities.
- Concern was expressed at the use of the term “consolidation” when Marine Farming is now expanding at its fastest rate (mainly extensions).
 - Marine farming has been expanding at the rate of approximately 10 ha/ year - until the end of 2014. (This figure is provided by MFA).
- Concern was expressed over the stresses created with aquaculture’s right to develop.
- Jonathan Large replied that going through the aquaculture provisions together will create an environment that all parties can work within. Concerns may be alleviated when the NES has been worked through.

- Can you expand on the need for more security of tenure?
 - It is about investment in our industry, jobs, people, capital and investments that have already been made in the area. Without security of tenure, MFA are unable to provide certainty or grow, as there are 300 consents expiring in 2024. With security of the consents it would flow on to markets, products and jobs.
 - The industry must continue to do research and development to farm the products better than currently, using the same space. The industry would like to glean better value out of the current products. A lot of money has to be invested to get new products to market.
 - The current fleet of vessels must be maintained as well.
- With regard to climate change should the MFA be becoming more of a regulator of the aquaculture industry?
- MFA does not have the ability to stipulate what is on different farms consents, that is the job of the Council. The potential ocean acidification will have an effect on everything, not just marine farming.
- Has research proved or disproved the views expressed by mussel farmers in the early days that the location of the farms and flow of currents meant that some farms didn't receive enough protein?
 - It is possible to control densities of mussels to deal with the variations in different areas; however the biggest influence is the water flow from Cook Strait which varies from season to season.
- There is an issue with the wake of the vessels servicing the mussel farms out of Havelock, causing erosion, especially when a king high tide combines with a storm and the wakes of the boats.
 - The Harmony group process will allow for discussion of community issues like this to be addressed.

Trevor thanked Jonathon, Debbie and Brendon for attending the meeting and said it was pleasing to have a process in place to keep communication open between the different parties.

5. Marlborough Environment Plan Update – Pere Hawes

- Submissions closed on 1 September 2016. There were 1033 submissions, which is a lot less than the submissions received when the WARMP and MSRMP were notified. Quite a few of the submissions are pro-forma (409). Submissions of particular interest to this group include:
 - A large number of submissions on discharges from boats provisions.
 - Fewer submissions on Coastal Occupancy Charges than expected. Themes on the submissions received include; opposition to the charges because occupiers already pay monitoring fees for moorings and questioning the equity between the different types of occupancy (particularly coastal structures versus marine farms).
- The submissions are now being summarised and compiled. Council will then notify a summary of decisions requested which will be publicly notified and then there will be a period of further submissions which allows people to make submissions in support or opposition to any of the submissions that have already been made.
 - A high proportion of submitters have indicated they would like to be heard.
 - When the hearings panel convenes it will decide on the hearings process. Generally the process hears submissions by plan provision but also will allow for some flexibility because of the obstacles some submitters have to overcome to get to a hearing.

- There have been a few submissions expressing difficulty in understanding the plan.
- There were a large number of hits on the web and heavy use of the YouTube videos and smart maps layers provided.
- For individuals such as landowners, staff have emphasised that the plan is not meant to be read cover to cover, but rather start with the maps, select the area you are interested in, go to the zone provisions and if you have an activity that requires consent then look at the objectives and policies.
- It would have been desirable to have more public dialogue either prior to or after notification, however with the available resources this was not possible. Staff assisted with 300 queries.
- 30% of submissions were submitted digitally.

6. Council supporting funding for Small Water Suppliers to meet DWSNZ – Linda Booth

- Linda is seeking clarification on whether there is Council funding to help small communities to reach the Drinking Water Standards of New Zealand (DWSNZ).
 - Cllr Hook replied that currently there is no funding for this, but the issue could be discussed by Council.
 - It would be better if individual community groups were to get together to approach Council.
 - It was pointed out that this is a Ministry of Health function and that there are different thresholds depending on the users of each supply. DWSNZ is about the potability of the water. When Council issues consents they are considering the effect of the consent on the source of the water.
 - Ministry of Health maintains a register of drinking water supplies, which is accessible via the Council website.
 - Ministry of Health is monitoring schemes now.
 - The UV lights used to treat water at Okiwi Bay are becoming obsolete.
 - The Havelock North E.coli outbreak was discussed, with the implication that smaller communities may be unable to sustain their schemes without some assistance.
 - It is encouraging that other communities are helping to fund the water upgrades for Havelock, Renwick and Seddon.

7. Opouri Valley Road – Residents' Concerns – Linda Booth

- Below is a PowerPoint presentation highlighting Tennyson Inlet ratepayers concerns:
 - Almost the entire Tennyson Inlet catchment is DOC land and has high experiential values due to unmodified vegetation cover.
 - However, sometimes the area is less than pristine, as observed below:

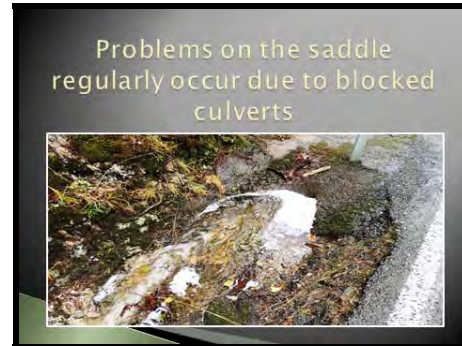


- Road Reserve is often used to the benefit of extending farmland. The rubbish is meant to be bio degradable, is this before or after it is taken by the winds and rain to lie peacefully in the trees or fences close by?
- Most folk realise that farming is important to the area; however the community also understand that Council have responsibilities in the management of roads. Would this activity be permitted to continue on State Highway 6?
- This area has a much larger rainfall than the rest of Marlborough. This is often leaving our roads in a dangerous driving condition. Water runoff from private properties causes flooding onto the road.



- Some residents would like to see greater support from Council.

- At this point the river has changed direction, with the excess road water draining from the road to the river bank.



- The bank is continually eroding away until it is now approximately two metres from the road.
- While residents appreciate the work Council undertakes to maintain this area. Many complaints have been forwarded to Council regarding these issues in the past. WE now ask what steps have or will be taken by Council to ensure an improvement in maintaining this infrastructure for the betterment of both the farming communities and the Tennyson Inlet Communities?

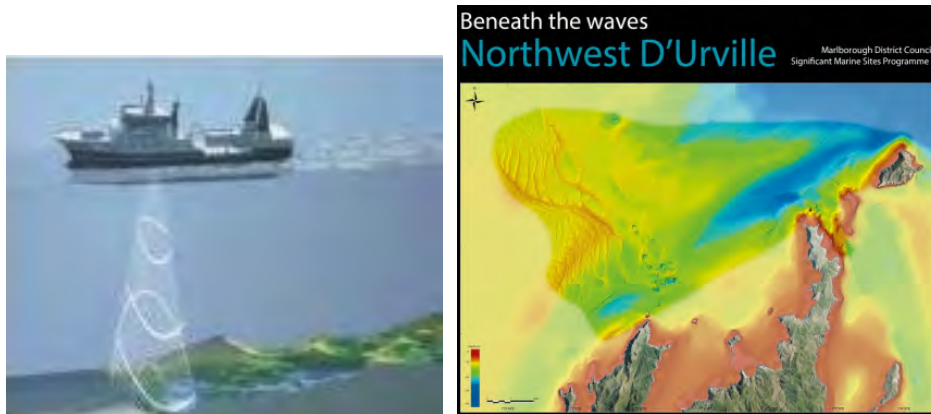
Replies:

- There are resource consents applied for, to take rock off Tennyson Hill to put in the river to stop the eroding bank. The bridge has moved through usage by heavy vehicles and will be repaired by Marlborough Roads this financial year.
- The cow crossing problem is something that is happening on State Highway 6 as well and staff are regularly dealing with it.
- Linda informed the group that although she regularly takes the information back to her community, they are not seeing any progress on the issues.
- Alan is going to provide the presentation to the Assets and Services Department and suggested the Residents Association have a meeting with Richard Coningham from Council. Alan is going to facilitate this meeting.

8. Coastal Programmes – Steve Ulrich

- Steve showed a presentation on the forthcoming multi-beam seafloor survey in Tōtaranui/Queen Charlotte Sound. Multi-beam is a swath of sound pings that measure the depth of the seabed and the returning strength of the signal indicates the type of habitat on the ocean floor (see image below). This information will improve our understanding of the distribution and extent of different habitat types for biodiversity, and thereby better inform community conversations about future marine protection.

- A pilot study was done off northwest D'Urville Island by NIWA in 2005 (see poster below)



- For the Tōtaranui/Queen Charlotte Sound project Council is partnering with Land Information New Zealand (LINZ) who is responsible for navigation safety charts.
- Council recently allocated \$1.5 million over two years. LINZ is adding an undisclosed amount.
- The survey will begin at the end of October and finish in June 2017. Reports will be out in June 2018.
- There has been a review on the effects of multi-beam technology on the Sounds dolphin populations by Blue Planet Marine. DOC experts have also reviewed the report which states the risk is negligible.
- There are protocols in place to minimise any risk to marine mammals. Surveying will be from the head of the bays to the entrances, or parallel to shoreline. If there are dolphins within 400 metres of the boat, the gear will be switched off. A network is being created with the water taxi operators and eco-tourism operators to find out where the dolphins are and there will be supervision of the project by marine mammal observers.

What will we get for science?

- Seabed mapping
- Habitats types
- Biogenic (living) habitats
- Improve hydrodynamic models
- Baseline for monitoring
- New research avenues
- Digital media products

Only Marlborough

MARLBOROUGH DISTRICT COUNCIL

- Open day on Saturday 22 October at Coastguard premises (Ogilvy Domain) in conjunction with Boat Safety Week. The multi-beam survey vessel and the Lady Elizabeth IV will be there as well as exhibits on bio-security and marine mammal education.

Questions/Answers

- Will the Pelorus Sound be mapped using multi-beam echo-sounder technology as well?
 - As this would be a multi-million dollar proposition the Council would need to build a community of interest who would be willing to co-fund it. Possible collaborators would be MPI and the Aquaculture Industry, and other interested parties.
- Why would King Salmon and MFA put funding into this project if the project was not finding places for Marine Farms?
 - The purpose of seeking to collaborate with the aquaculture industry is not for finding places for new farms. The aquaculture industry also has an interest in better understanding the ecology of the Marlborough Sounds. Steve's role includes pulling together funding collaborations where there are likely to be shared interest in science.
- Is Forestry included in the possible collaboration?
 - This has not yet been considered, as the Pelorus Sound project is in the very early stages of being scoped.
- A science partnership with forestry is being developed. Council has applied to the Forest Growers Levy Trust for funding for measuring how sediment is coming from forestry blocks in the Sounds. An application has also been made to co-fund Council's investment in the Havelock estuary which is trying to identify the sources of sediment and rates of sedimentation over the last 50 years.
- A community of interest in better monitoring of coastal water quality is also being developed with the aquaculture industry and MPI.
- Estuary monitoring has recently occurred in Shakespeare Bay, Waikawa Bay and Whangarae Bay. For the scientific reports, please go to: <http://www.marlborough.govt.nz/Environment/Coastal/Coastal-Reports.aspx#Estuaries>



- There are now good seagrass beds in Shakespeare Bay. Surrounding hill sides have regenerated into native since the 1970s when environmental degradation was at its nadir.
- Zoning is proposed to change in Shakespeare Bay in the Marlborough Environment Plan. If this occurs, industrial activities will have to be carefully managed to make sure that the regionally rare seagrass beds are protected.
- The Waikawa and Whangarae Bay reports will be presented to the Environment Committee tomorrow. There are some historic contamination issues in Waikawa Bay.

- Council's \$350,000 investment in the Coastal Programme has allowed Steve to co invest and get some studies of mutual benefit accomplished. One example is the ongoing funding from the Department of Conservation for the significant marine site monitoring.
- Another example is that the Marine Farming Association has given substantial funding of \$40,000 to the Beatrix Bay and Kenepuru sediment coring studies. This will be reported at the end of October and the findings will be announced at the 1 December Environment Committee Meeting.

9. Native Succession – Nicky Eade

- Marlborough Environment Awards are open for entries. There are seven categories; marine, forestry, habitat enhancement and landscape, business innovation, community innovation, farming and wine industry innovation. Nicki encouraged the group to put forward marine entries.
- For further information on the Cawthron Marlborough Environment Awards, it can be viewed at <http://www.cmea.org.nz/>
- The Significant Natural Areas Project (SNA) annual newsletter has been recently published:
 - This includes the results of Landowner questionnaires and revisiting a number of sites (South Marlborough). As this is a voluntary operation it has been important to get this information.
 - Below is link to the Significant Natural Areas Project – Newsletter July 2016.

http://www.marlborough.govt.nz/sitecore/shell/Controls/Rich%20Text%20Editor/~/_media/Files/MDC/Home/Environment/Biodiversity/Significant_Natural_Areas_Newsletter_August_2016.pdf

- Council is consulting with Landcare Research through a small Envirolink grant to consider carrying out a re-mapping exercise to update the NZ Land Resources Inventory (NZLRI) information which allocates a Land Use Capability Unit and land class (1 – 8) to all land and is a tool to assist with land management and planning.
 - This has been prompted by the National Environmental Standard for Forestry which may be imposed on the Council by the Government within a year and relies on NZLRI information to classify land in regard to its erosion susceptibility.
 - The Sounds (and most of the South island) was mapped in the 1970s at a 1:60000 scale.
 - The new mapping, using new technology like Digital Elevation Models along with soil and geology information, could be on a scale of 1:10-15000 which is much better for property scale assessment and management decisions.
- There are new draft guidelines for converting Pine to Native vegetation in the Sounds. There has been input into the document from the Sounds Restoration Trust, DOC staff and forestry groups.
 - The guidelines give information on the five questions involved in the process:
 1. How do you deal with an existing plantation?
 2. What factors will influence what happens after the pines are removed?
 3. How should the subsequent pine seedling and regrowth be dealt with?
 4. Will there be emission trading scheme liabilities?
 5. Whether or not to plant natives to enhance regeneration.
- Nicky would appreciate feedback on the draft document. Please provide any feedback directly to Nicky by email nicky.eade@marlborough.govt.nz

10. Integrated Management – Marine Futures – Eric Jorgenson

- Funding has been received from Council.
- The last Forum meeting was postponed due to the amount of apologies received
 - Involved in, stakeholder panel meeting for sustainable Seas The next meeting in October will have its own Chair, until now Julie Hawes from Sustainable Seas has been chairing the meeting.
 - There have been two senior resignations from the Sustainable Seas Science Challenge Team (Project Manager, Kate Greenfield and The Challenge Communications Outreach Leader).
 - Sustainable seas have undertaken in the last six weeks, key activities building awareness with central government ministries.
 - 8 1/2 projects approved under the innovation project. Anyone can tender for these but it mainly provides opportunities for research agencies.
 - Have been involved in a workshop called Tipping Points, how to manage approaching an ecological tipping point.
 - Have been involved in a work shop called Navigating Marine Social Ecology which involved mainly research based people and Iwi.
- There have been new fisheries decisions; the commercial paua quota has been cut by 50%. (Recreational, customary not affected). Other sources of mortality i.e. poaching have increased.
- Snapper allocations increased by 25% (commercial). Recreation allocation increased by 200% (which is not an increase in real terms but is an adjustment to reflect what is being taken recreationally already)
- Marlborough Marine Futures is discussing subjects for the next workshops, some possibilities:
 - Appraisal of the Marlborough Environment Plan review process.
 - Marine Protected Areas Act (MPA). Legislation is being drafted. The Forum would like to be engaged in this process as the content in the draft act is disconnected.
 - Understand the questions which lead to an overarching coastal science Strategy.

Question/Answers

- Trevor questioned the use of resources in appraising the MEP review process before the process is finished and suggested it should be a lower priority than the other workshop possibilities. (42.20)
- The next Forum will be held before Christmas.

Condolences were expressed for Raymond Smith on the recent loss of his wife.

11. DOC Update

Recreation and Historic

- Upgrading work at Karaka Pont was completed resulting in improved access to the beach at the end of the point, new picnic tables and the use of stone for hard stand areas and steps. Also achieved was a complete reseal of the carpark area. The final piece of work that is underway, involves a revamp of the interpretive signs.

- The Momorangi Campground facilities upgrade is still under action. All the above ground work has been completed and now the focus is on some improvements to stormwater and sewage management.
- The campground manager contract is up for renewal and this will be put out as a request for tender shortly.
- Staff are in full swing preparing recreation sites for the approaching summer season. Track side trimming has been done on the Queen Charlotte Track and on Blumine Island.
- Accommodation sites that have on-line bookings, Pelorus Bridge, Momorangi and Nydia Lodge have all had steady interest in bookings over the coming Christmas/ New Year period. Momorangi sites sold out within a couple of hours of bookings being made available earlier in the month. Nydia Lodge is again being used by Marlborough Boys College over several weeks in the first term of next year which is a return to what they did up until a few years ago for their Year 9 classes.
- Staff have been assisting the Queen Charlotte Track Inc. in seeking alternative funding for track upgrades as part of implementing the Department's operational plan for the track. This has been focused on the Ship Cove end of the track with emphasis on providing better gradients for all users.
- The Link Pathway team continue to march ahead with developing new sections of track. Currently this is focussed at the Mahakipawa end and just out of Picton at Wedge Point. Planning is well underway for the section between Grove Arm and Momorangi.
- A new agreement has been signed up with the Matai Bay Hut Trust for the ongoing management of the hut which is vastly improved since the community took it over several years ago.

Biodiversity

- Staff are in the middle of the annual boneseed control programme which is run in partnership with Marlborough District Council. They are finding fewer plants again this year which bodes well for the future and reinforces that the current way of doing things is effective.
- A census has been completed on the native frog populations on the various islands. For Maud Island this is a repeat of a census that was last done in the 1990s when between 25,000 - 30,000 individuals were estimated. Frogs that were translocated from Maud to other islands in Queen Charlotte Sound/Totaranui have successfully produced some new offspring.
- We can now say that the mouse eradication project on Maud Island has been a success. Two years have passed since the bait was laid and no animals have been detected. This has come at a cost of between \$150,000 – \$200,000 for coverage of just 318 hectares.
- A translocation of Stephens Island Giant Weta to Puangiangi Island has been completed. This has involved 300 weta being shifted over a 3 year period.
- Improvements to the fence on the northern end of Arapaoa Island (Arapawa Island) have been completed. This prevents grazing animals, such as goats from entering some areas of particular biodiversity importance and the difference in growth on either side of the fence is quite noticeable.
- Staff continue to improve on biosecurity measures as it pertains to limiting the chance of unwanted organisms and weeds getting into significant areas on islands. This has included installing a grate on the wharf at Motuara Island for scraping footwear on, and refinements to information supplied to organised groups visiting islands.
- The continuing rat monitoring on D'Urville Island is still showing that rat numbers are not increasing significantly. D.I.S.E.C.T have made some progress on gaining more support for a control programme across the whole island and are currently looking at developing an operational plan to do this.

- Forest and Bird have recently completed the installation of A24 traps in the Pelorus Bridge area.
- Ngati Koata and DOC spent 3 days on D'Urville Island assisted by sponsors OMV planting in a wetland area in Greville Harbour/Wharariki.
- Forest and Bird recently hosted a planting day at Ronga Reserve in the Rai Valley with most volunteers travelling over the hill from Nelson for the day.
- Hunters, including a new staff member, have been reducing goat numbers at Nydia Bay, some sites further out in Pelorus Sound/Te Hoiere and on Arapaoa Island.

Community

- A successful predator control workshop was run in Picton just over a week ago, in conjunction with Picton Dawn Chorus. This attracted community groups and individuals from mainly Marlborough but also with some people coming from the West Coast and Motueka. Participants were keen to see more events such as this that bring people together and improve knowledge on best practice.
- Conservation Week starts today.
- The DOC Community Fund allocations for 2016 are yet to be determined. Of the 28 applications received in this region, 14 were from the Sounds. Those getting through to the second round are now filling in the full applications. Around \$400,000 will be allocated in the northern South Island Region this year.
- The SMART (Sustainable Marine Mammal Actions in Recreation and Tourism) course which is aimed at improving people's behaviour around marine mammals is continuing to be well received. There are sites which training will be provided at before the end of the year.
- The Sounds DOC team hosted the rest of the region for a two day Hui at Outward Bound. This included staff undertaking local weed control projects.

Other

- Recruitment is underway to replace the staff on Stephens Island who have come to the end of their 3 year stint.
- Robin Cox's replacement is still being organised with temp staff helping to fill this position in the interim.

Questions and Answers

- It was clarified that all pest free islands are monitored.
- There is concern from community members on Arapaoa Island that there is an animal welfare issue with DOC arriving to cull goats on the island while the goats are kidding.
 - DOC is aware of this and has met with community members on Arapaoa Island. They have agreed not to hunt goats on the island for a three month period and have been to the island to cull goats ahead of the kidding season.
- A ferret was spotted on the road between the Ronga Saddle and Okiwi Bay on 8 September.
 - The information on the ferret will be passed to groups working in the area.
 - It would be beneficial to receive feedback from the community about the ferret population.

- Have any tracks been progressed for access by people with disabilities?
 - Nothing has been specifically designed for disabled access, but reducing barriers is taken into consideration when designing new tracks (specific example – new track behind Momorangi Bay Campground). Walks for short-stop travellers are designed to cater to as many people as possible.
 - It has been reported to Council that there are moth plants growing in Duncan Bay. There has been no action on this yet. (This will be put on the meeting's action list)

12. General Discussion

- A bylaw on freedom camping is being drafted which will then have to go through Full Council to be ratified. Proposals include:
 - Only self-contained camper vans along Queen Charlotte Drive.
 - No freedom camping within Picton Boundary.
 - 12 self-contained vans allowed at Koromiko.
 - Duncan Bay, self-contained vehicles will still be allowed to camp in the bay.
- The working group is looking for guidance from Central Government on the issues of freedom camping and on vans that are being leased as self-contained which are definitely not.
- Trevor thanked the group members for all the voluntary work they do for the Sounds Advisory Group and assured them that the work they do is highly regarded.
- Trevor and the group thanked Yvette for all her help with the group over her time as the Secretary.
- The group thanked retiring Councillors Peter Jerram and Graeme Barsanti for their efforts on behalf of the group and Trevor for chairing the group.

13. Positive Feedback

- Rob commended Steve Urlich on his commitment to providing information that is required to make proper process.

Next meeting 14 November 2016 at Rai Valley (to be confirmed).

Meeting closed 1.45 pm.

**Agenda items should be sent to
Rebecca Waldron (e-mail Rebecca.Waldron@marlborough.govt.nz)
By Friday 28 October 2016**

Action	Responsibility
Provide the Opouri Road Residents Association presentation to the Assets and Services Department.	Alan Johnson
Facilitate a meeting between the Opouri road Residents Association and Richard Coningham from Council.	Alan Johnson
Moth Plants growing in Duncan Bay	Alan Johnson

Record No:16190740

2. Review of Aquaculture Provisions

(Report prepared by Pere Hawes)

R425-02-19-04

Purpose

1. To confirm the process for continuing the review of the marine farming provisions of the Marlborough RPS, Marlborough Sounds RMP and Wairau/Awatere RMP.

Background

2. The Council has been reviewing the provisions of the Marlborough RPS, Marlborough Sounds RMP and Wairau/Awatere RMP and, as a result of this review, prepared the Marlborough Environment Plan (MEP).
3. The MEP was publicly notified on 9 June 2016. In approving the MEP for notification the Council decided to remove the draft provisions managing marine farming and to continue the review of these provisions.
4. Marine farming is a significant activity in the Marlborough environment and makes a significant contribution to the social and economic wellbeing. There are 586 marine farms authorised to operate in Marlborough's coastal environment, the majority of which are located in the enclosed waters of the Marlborough Sounds. 330 of the farms are deemed permits (ex marine farm licences) that expire in 2024.
5. One of the matters identified by the industry through consultation undertaken as part of the review process has been a desire for increased certainty with respect to the reconstenting of existing coastal permits.
6. The Marlborough Sounds also supports natural and human use values that are not always compatible with marine farming. These values vary across the Marlborough Sounds and can include natural character, significant habitats, significant landscapes, recreational and other amenity values, navigational safety, and spiritual and cultural values of tangata whenua iwi.
7. The Committee met to discuss the process of review on 15 July 2016. This report draws upon the outcomes of that workshop.
8. There are other processes currently underway that may influence the planning environment for marine farming. Central Government is considering the matter of reconstenting through a programme of providing national direction for marine farming. The process is being led by MPI. MPI is also leading a process seeking to establish New Zealand King Salmon farms on a sustainable footing. The outcomes of these processes may have a bearing on the Council's own review.

Comments

9. The Committee must decide what process it wishes to use to continue the review marine farming provisions of the Marlborough RPS, Marlborough Sounds RMP and Wairau/Awatere RMP. The review process to date has involved Council consulting with marine farmers and, separately, the remainder of the Marlborough Sounds community.
10. As the Council was not comfortable with the outcome of this consultative process, it is recommended that an alternative approach be utilised. One option is to provide an opportunity for people in the community with different perspectives to share those perspectives directly with each other.
11. The MPI led New Zealand King Salmon process utilises a working group to identify and assess options to achieve sustainable outcomes. The Council could use a similar process to inform its own review. By gaining an understanding of the respective views, the parties involved in the working

group may be able to identify and progress options for future management of marine farming. These can then form advice to the Council, but it is Council that must determine the marine farming provisions that will eventually form part of the MEP.

12. The composition of the group should contain representatives of the marine farming industry. Given that the two largest marine farmers comprise a significant proportion of the industry, it is recommended that Sanford Limited and Talleys Group Limited be directly involved in the working group. The Marine Farming Association should also be involved to represent the remainder of the marine farming industry. Aquaculture NZ could also be involved given their involvement in the industry at a national level.
13. It is important that the Marlborough Sounds community is also involved in the ongoing review. The Council is involved with, or supports, several community groups including the Sounds Advisory Group and the Marlborough Sounds Integrated Management Trust. These groups could be asked to nominate a member or members for the working group as representatives of the community. The Kenepuru and Central Sounds Residents Association has taken an active involvement in marine farming issues in the recent past and they could also be asked to nominate a member.
14. Central Government is involved in managing activities in the coastal marine area. The Ministry of Primary Industries (MPI) is involved in promoting the sustainable development of the industry, performs the undue adverse effects test and manages biosecurity threats. The Department of Conservation (DOC) is involved with providing policy direction with respect to appropriate use of the coastal environment through the NZCPS and manages reserves and threatened species in the coastal environment. It is recommended that each organisation be asked to nominate a working group member.
15. Marlborough's tangata whenua iwi should also be involved in the ongoing review. It is recommended that each of the iwi authorities be approached to establish the best approach for involving iwi in the ongoing review. This may or may not be as part of the working group.
16. In summary, the working group could consist of:
 - One representative from each of Sanford Limited and Talleys Group Limited;
 - One representative from each of the Marine Farming Association and Aquaculture NZ;
 - Two representatives from the Sounds Advisory Group and one representative from Marlborough Marine Futures;
 - One representative from the Kenepuru and Central Sounds Residents Association;
 - One representative from each of MPI and DOC;
 - Potentially some form of representation from iwi (depending on the outcome of consultation).
17. The NZCPS contains provisions that will continue to guide the review process. In particular, Policy 8 requires the Council to provide for marine farming activity in appropriate places. Other policies in the NZCPS assist to determine appropriate or inappropriateness of specific locations. Given the above, it is anticipated that the spatial allocation of the coastal marine area for marine farming will be a key role for the working group.
18. The Council holds information that will assist any determination of the appropriateness and/or inappropriateness of marine farming at particular locations in the Marlborough Sounds. This includes information collected as part of the review process such as the identification of outstanding natural features and landscapes; areas of high, very high and outstanding natural character and significant marine sites. The Council also retains an accurate record of authorised space for marine farming and the basis on which they have been granted (or refused). The information held by the Council is currently being compiled.
19. Other parties may also hold additional information that may usefully inform the determination of the appropriateness and/or inappropriateness of marine farming at particular locations.

20. The suggested membership of the working group has experience and/or knowledge that can be applied to the information compiled. There may be some merit in retaining a technical advisory group to assist the working group (such a group is utilised in the MPI process for New Zealand King Salmon farms).
21. At the workshop, it was considered appropriate for Councillors to be directly involved in the working group. Councillors Hook, Oddie and Jerram were nominated. Councillors also sought to retain John Maassen as the Council's legal advisor through the review process. It is anticipated that he would attend working group meetings. Finally, it was considered appropriate to also involve the Manager of Environmental Policy in the working group.
22. There has been a desire from the industry to implement bay-by-bay management in terms of preparing or processing applications for resource consent or for implementing operational management. Given the scale of both the Marlborough Sounds and the marine farming activity, a similar approach could be utilised to approach the task of determining an appropriate spatial allocation for marine farming. The Marlborough Sounds would then be divided into appropriate management units.
23. There may be the need during the process to seek further information to assist the working group. Where this information is to be supplied by a third party there may be costs incurred in obtaining it. There may also be administrative costs associated with the working group. For example, the community representatives may expect reimbursement for time and travel. MPI administers the Aquaculture Planning Fund which is specifically set up to assist regional councils and unitary authorities to undertake planning for aquaculture under the RMA 1991. This is allocated on a 50:50 cost sharing basis with the relevant councils. An application could be made to the Aquaculture Planning Fund if required to assist the review process.
24. If the working group is able to provide advice to the Council and if the Council is able to confirm marine farming provisions prior to the MEP becoming operative, then the proposed provisions would be able to be notified as a variation to the MEP.

Summary

25. The Committee must decide what process it wishes to use to continue the review of marine farming provisions of the Marlborough RPS, Marlborough Sounds RMP and Wairau/Awatere RMP.
26. It is recommended that a working group be formed to assist the Council to determine appropriate locations for marine farming in Marlborough's coastal marine area. The working group should comprise representatives from the marine farming industry, the remainder of the Marlborough Sounds community, central government agencies, tangata whenua iwi and the Council.
27. The working group would assist the Council to determine appropriate and inappropriate locations for marine farming based on the information held by the Council and by others. A bay-by-bay approach is probably the most efficient and effective approach to approach this task.
28. Provisions to manage marine farming that may result from the work of the working group could be notified as a variation to the MEP.

RECOMMENDED

1. **That the report be received.**
2. **That a working group be established to assist the Council with the review of the marine farming provisions of the Marlborough RPS, Marlborough Sounds RMP and Wairau/Awatere RMP.**
3. **That the following people/groups be approached to participate in the working group.**
 - a) **One representative from each of Sanford Limited and Talleys Group Limited;**
 - b) **One representative from each of the Marine Farming Association and Aquaculture NZ;**
 - c) **Two representatives from the Sounds Advisory Group and one representative from Marlborough Marine Futures;**
 - d) **One representative from the Kenepuru and Central Sounds Residents Association;**

- e) One representative from each of MPI and DOC;
 - f) Potentially some form of representation from iwi (depending on the outcome of consultation).
4. That tangata whenua iwi be approached as to how they consider they should be involved in the review process.
 5. That the process of determining the appropriateness of marine farming in Marlborough's coastal environment occur on a "bay-by-bay" basis.