

## **Minutes for Meeting of the Sounds Advisory Group held at Marlborough District Council on Monday, 15 February 2021 commencing 9.30 am**

**Present:** Clr Faulls, Clr Taylor (from 10.00 am), Clr Oddie (from 9.40 am), Ken Roush, Monyeen Wedge, Ross Withell, Vic Koller (from 10.05 am), Lynley Perkins (from 9.40 am), Ned Wells (Marine Farming), Dave Hayes (Department of Conservation), Steve Murrin (Marlborough Roads) (from 10.40 am)

**MDC Staff Attending:** Alan Johnson (Environmental Science & Monitoring Manager), Oliver Wade (Environmental Scientist), Juliet Gibbons (Communications Advisor), Luke Grogan (Harbourmaster), Pere Hawes (Environmental Policy Manager), Louise Walker (Planning Technician & Hearings Facilitator), Jono Underwood (Biosecurity Manager), Steffi Henkel (Environmental Scientist Water Quality), Bernadette Brooklands (Secretary), Chris Hines (Secretary)

### **1. Welcome**

### **2. Apologies**

Eric Jorgensen, Tim Greenhough, Linda Booth, Glyn Walters (Communications Manager), Jodi Milne (MPI), Rob Schuckard

### **3. Confirmation of minutes 16 November 2020**

- The minutes of 16 November 2020 were taken as read.

### **4. Actions from the previous meeting**

<b>Action</b>	<b>Person Responsible</b>
1. Update SAG members of Marine Farming Industry's Water Monitoring Programme	Ned Wells
2. Update SAG members on Recreational Water Quality Monitoring Programme, (including the information for Waikutakuta/Robin Hood Bay from 2019/2020)	Steffi Henkel
3. Invite Mike Bell to next SAG meeting	Ned Wells
4. Check if MFA is able to alert Residents Associations when algal blooms occur	Ned Wells
5. Check if there is any way communication on track closures could be improved	DOC
6. Follow up with Marlborough Roads on the issue of the Roding Crew multitasking	Clr Taylor
7. Follow up with Marlborough Roads on the dangerous area at the Solomon's on Kenepuru Road	Clr Taylor
8. Discuss adding more Sounds content to Marlborough Matters	Juliet Gibbons
9. Provide information on the Review of SAG to meeting in the new year	Alan Johnson
10. Add The Interagency Management Group – research strategy and research area to the February agenda	Oliver Wade

Action	Person Responsible
11. Invite Pere to meeting to present on the Aquaculture Provisions in the MEP/ discuss the impacts of the NPSFW and options for maintaining and review of the MEP	Alan - Pere

### Action Point 1

- Ned Wells gave an update on the Marine Farming Industry's water monitoring programme.

### Questions/Answers

- Ned was asked about the bio toxins in Tori Channel/Kura Te Au. There are algae species in the channel and a report is completed each month. There are plenty of nutrients in the Channel.

### Action Point 2

- Steffi Henkel to give a presentation on the Recreational Water Quality Monitoring Programme. Refer item 9 below.

### Action Point 3

- Mike Bell was unavailable for today's meeting.

### Action Point 4

- When algal bloom levels are high, the matter is referred to MPI who will follow up and do a media release if required.
- Residents can subscribe to shellfish bio toxin alerts on the MPI website at: <https://www.mpi.govt.nz/news/subscribe-to-mpi>
- It was suggested Jodi Milne be invited to the next meeting to advise on communication channels.

### Action Point 5

- Dave Hayes advised that track closures are on the website.
- DOC is looking at ways information regarding track closures can be targeted more effectively to the community.

### Action Point 6

- Steve Murrin (Marlborough Roads) advised that multitasking for the drainage and roading crews is not always possible. Both crews are assigned their own workloads and do not carry equipment that allows them to do alternate work.

### Action Point 7

- The geotech report has been completed for area of danger at the Solomon's on Kenepuru Road.

### Action Point 8

- Juliet Gibbons advised that Council is looking at other ways of getting information out to the community, for example, local residents associations. If residents associations have interesting stories or news, please contact Juliet or Glyn at Council.
- It was suggested that the Council could contact Beachcomber in Picton who deliver mail etc. to Sounds residents. This may be a way that the Council could reach the outer Sounds residents.
- Marlborough Matters is a weekly eNewsletter full of Council information. This is sent out to anyone who signs up. Follow the link below to sign up or for previous newsletters. <https://www.marlborough.govt.nz/your-council/council-eneewsletter>

### Action Point 9

- Refer item 9 below.
- Alan Johnson provided a printed copy of the Sounds Advisory Group Discussion document which

contains feedback from SAG members. For those who could not attend the meeting Alan will email a copy to you. Email feedback to Alan by end of April for discussion at the next meeting.

[Alan.Johnson@marlborough.govt.nz](mailto:Alan.Johnson@marlborough.govt.nz)

### Action Point 10

- Oliver Wade has a draft of the coastal marine area which he is working on with Dave Hayes and Jodi Milne to develop strategies on different entities.
- Refer item 5 below.

### Action Point 11

- Refer item 7 below.

## 5. Harbours & Coastal Science Update – Luke Grogan, Oliver Wade

- There have been concerns in the media about the risk of ferry wakes in the Tory Channel/Kura Te Au.
- There has been a suggestion from Dr Peter McCombe (Oceanographer) of Ocean Numerical to adapt technology which monitors vessel and environmental waves. Real time tide data and information of depth of water could be collected and used to build a three dimensional tidal model. These monitors could be placed on jetties in different locations within the channel. Cost of monitoring would be \$250,000, with Kiwirail already making a contribution.
- Sediment plates located in various tidal locations in the Inner Pelorus Te Hoiere measure the sediment levels each year and will detect if water is getting deeper or shallower.
- In the past 2 weeks there has been a seagrass inventory in the Sounds. This is a good indicator of climate change and water quality.
- Field work commencing:
  - Rob Davidson will be commencing the marine monitoring in the outer Pelorus Sound/Te Hoiere and also in Te Whanganui/Port Underwood. This information will be assessed for their significance and if significant, will be incorporated into the Marlborough Environment Plan.
  - Intertidal survey in the Wairau Lagoon for an ecological survey and an assessment of health. This was last done in 2015.
  - Monthly water testing.
  - The Moana Project. The water temperature is 2 degrees lower in the Cook Strait this year.
- NIWA have a Blue Cod project over March and April to study the juvenile Blue Cod around Rangitoto kit e Tonga/D'Urville and Chetwode Islands.
- During March and April NIWA will be completing phase two of the Sustainable Seas National Science challenge. Auckland University and NIWA will be present in the outer Queen Charlotte Sound/Tōtaranui to commence a case study on shellfish and sustainability, and eco systems.
- Mooring resource consents in Waikawa Bay and Picton have been put on hold for now while market research on new mooring products is being investigated. Picton Marina is crowded with boats over the summer trying to get into Picton; however, there is a lack of space due to the ban of dropping anchors between Wedge Point and Picton Point.
- A free jet ski course was run out of the Queen Charlotte Yacht Club with less than expected uptake. There have been complaints received about jet skis which will mean there will be stronger enforcement over the coming summer. Drones were also used this season to reinforce safety on the water over the summer with good feedback. It is not expected they will be used again.
- See link below for Oliver Wade's report on measuring mussel farming effects on plankton in the Marlborough Sounds and the link for the marine heatwave forecast.

<https://www.moanaproject.org/marine-heatwave-forecast>

[https://www.marlborough.govt.nz/repository/libraries/id:1w1mps0ir17q9sgxanf9/hierarchy/Documents/Environment/Coastal/Mussel%20Farming%20List/Measuring\\_mussel\\_farming\\_effects\\_on\\_plankton\\_in\\_the\\_Marlborough\\_Sounds.pdf](https://www.marlborough.govt.nz/repository/libraries/id:1w1mps0ir17q9sgxanf9/hierarchy/Documents/Environment/Coastal/Mussel%20Farming%20List/Measuring_mussel_farming_effects_on_plankton_in_the_Marlborough_Sounds.pdf)

### Questions/Answers

- Holiday home owners are concerned about the ferry traffic as owners cannot get into Picton Marina or tie their boats up during the busy season as so many boats are around.
- Clr Oddie enquired if there was a plan for the wharfs. It was noted that there is no plan yet.
- The Portage marina continues to be an issue. The current owner, who has the capability and knowledge, would like to design and build a replacement marina. Council is currently working with him through the Resource Consent process.
- One of the bays residents has a family member with a disability and there is no place to tie up a boat if you are a passenger with a disability when the marina/jetty is full. The Harbourmaster could do a pamphlet drop however; it is more practical to be self-managed in the community with patience of people being there at peak times.
- Vic Koller brought up the issue of erosion in Mahau Sound. Luke suggested that the Tory Channel/Kura Te Au vessel/environmental wave monitoring could possibly be used to determine what is causing the erosion. In the meantime, if residents take videos of the wakes created by boats, sending them to the Harbourmaster could be helpful to understand the problem.

**A break for morning tea was taken with the meeting resuming at 11.00 am.**

### 6. Marlborough Roothing Update – Steve Murrin (Marlborough Roads)

- The emergency earthwork in French Pass Road is finished. The pavement work should be sealed by end of the week of the 15 February. There is another slump in the road by Elaine Bay where springs are causing issues.
- Geotech work has been completed at Kenepuru. The wall will take 8 to 10 weeks to build.
- There is a possibility of road widening sections of the Tori Road. Pre winter gravel stocks are being organised.
- Dust suppression application has been carried out on major gravel roads, in particular, roads being used by logging trucks. If there are houses within 60 meters of the road, then dust suppression will be looked at.
- Mowing has been restricted due to the fire restrictions.
- The Te Aumiti/French Pass jetty is large and old and requires an assessment to determine whether to upgrade or rebuild. A meeting with the local residents will be organized to determine their needs.
- DOC roads on Rangitoto kit e Tonga/D'Urville Island will be done around March.
- Stage two of seal widening will commence between Havelock and Pelorus Bridge.
- Closing date for submissions for roading for the next 10 years in the top of the South is 20 March 2021. Over the next 3 years there will be a 15% decrease in budget, consequently essential work will take priority.

### Questions/Answers

- It was asked on behalf of the Eli Bay Road residents about the lack of gravel on the road after the grader came through and took the gravel off the road. The road then flooded and caused issues due to the lack of gravel. Lynley Perkins presented Steve Murrin with a letter from the local residents about this matter.

**Steve Murrin left the meeting at 11.15 am.**

### 7. MDC Policy Update Aquaculture & Proposed Marlborough Plan (PMP) – Pere Hawes and Louise Walker

- The PMP is now in the appeal phase. No confirmed mediation schedule has been received from the Court as yet. Informal mediation with parties and Council has been taking place. An amended mediation schedule will go to the Court today.
- When Smart Maps are upgraded (MDC website – see links below and **Appendix A**), it will be easier to view **current** appeals. Currently **all** appeals are showing.

- On 2 December 2020 Council notified Variations 1 and 1A - marine farming and finfish farming. See links below and **Appendix A** for Smart Maps regarding Variation 1 and 1A. Submissions close on 26 February 2021 and a summary of the submissions will be notified to the public.

<https://www.marlborough.govt.nz/your-council/resource-management-policy-and-plans/proposed-marlborough-environment-plan/variations/variation-1-and-1a>

Provision Documents:

<https://www.marlborough.govt.nz/your-council/resource-management-policy-and-plans/proposed-marlborough-environment-plan/variations/variation-1-and-1a/variation-provisions>

Section 32 reports:

<https://www.marlborough.govt.nz/your-council/resource-management-policy-and-plans/proposed-marlborough-environment-plan/variations/variation-1-and-1a/section-32-reports>

Guidance Documents:

<https://www.marlborough.govt.nz/your-council/resource-management-policy-and-plans/proposed-marlborough-environment-plan/variations/variation-1-and-1a/background-information>

- Clr Faulls requested Pere speak at the next meeting on the impacts of the MPS for fresh water.
- Aquaculture Provisions is very technical and complicated. Pere can email a summary to SAG members if requested.
- The Marine Farm Industry is preparing a submission.

#### Questions/Answers

- Anything not subject to appeal would be operative. On the maps, anything subject to appeal has a highlighted box. Once completed, the highlighted box comes off.
- Marine farms can continue until the end of their consent date. Reseeding ceases, but removal of equipment can take up to 3 to 5 years as all existing product needs to be harvested first.

**Louise Walker left the meeting at 12.05 pm.**

#### **8. DOC Update – Dave Hayes (DOC)**

Recreation

- The bigger campgrounds have had higher than normal use over the last 2 months with smaller campsites not as busy, but showing reasonable levels of occupancy in the near future.
- There has been theft of camping fees from some sites over the season. Steps have been taken to minimize this.
- Outward Bound watches continue to provide very useful assistance to the work programme. Recent work has included maintenance of the facilities at Kumutoto.
- High temperatures and low rainfall in January started to raise the possibility of another partial closure of Queen Charlotte Track. Recent rain has lowered the risk significantly until at least the end of the month.

Biodiversity

- A lizard survey occurred at key sites around the Sounds recently. Increased populations of Striped Gecko were found on Arapaoa Island and Durvauchelle Gecko on Sentinel Rock. There will be more survey work, especially looking for Green Gecko populations.
- Planning is underway for aerial pest control in the Tennyson Inlet catchment around midwinter. Key stakeholders have been contacted and public meetings have been held at Duncan and Penzance Bays.
- Wasps are being monitored at key sites. It is important that the rules for using Vespex are adhered to.
- DOC has been working with the Marlborough Sounds Restoration Trust to set up pilot areas for community led pest control. The sites are at Double Cove and the northern side of Wedge Point. This builds on the Trusts earlier work with wilding pine removal.

- 75 tuatara have been returned to islands from a captivity site in Invercargill. The transfer involved Ngati Koata and Ngai Tahu representatives supported by DOC staff and museum staff from Invercargill.

- More knowledge is being gained on managing King Shags with tagging of more birds. There is ongoing commitment from a wide range of partners working together on this program.

#### Community

- Tenders are being sought for the Titirangi Farm Park concession and a site meeting for potential applicants is scheduled for Thursday 18 February.
- Sounds Foreshore Reserve Permit renewals are being worked through. Fees are being reviewed.
- Recruitment for a Community Ranger based in Picton is almost completed.

#### Government

- The new Minister is wanting a review of the legislation that is old and does not cover current issues in the conservation field.
- Government departments set targets by the end of 2025 to be carbon neutral. In the Sounds DOC will do this by using electric vehicles and no longer purchasing coal.
- Dave acknowledged the passing of Pip Aplin. He had a long career working in some fairly remote places, including on Takapourewa/Stephens Island as the lighthouse keeper. More recently he was the Chair of the D'Urville Island Stoat Eradication Community Trust (DISECT). His commitment to conservation and the environment will be remembered.

#### Questions/Answers

- Currently the signage by the church in Kenepuru says 'no camping' which deters all campers. The sign should read, 'no freedom camping'. Dave will follow up.
- There has been an issue of erosion caused by 4WD vehicles on the Picton foreshore. It was noted that if use causes damage, then DOC will look at what other options are available.
- There has been a report from campers of large numbers of wasps at Davies Bay. This will be looked into.
- There was a question about DOC maintaining existing structures. The public may contact the RMA Planners who will be able to advise if coastal hazard management expertise or other technical expertise is needed. If in doubt, contact the RMA Planning team: [rma@doc.govt.nz](mailto:rma@doc.govt.nz)
- Dave was unaware that Te Whanganui/Port Underwood residents believe that the shag numbers had reduced or any issues that may cause this.
- DOC links of interest:
  - <http://www.environmentguide.org.nz/rma/resource-consents-and-processes/notification-of-resource-consent-applications/when-are-adverse-effects-more-than-minor/>
  - <https://www.doc.govt.nz/about-us/science-publications/conservation-publications/marine-and-coastal/new-zealand-coastal-policy-statement/new-zealand-coastal-policy-statement-2010/>

**A lunch break was taken with the meeting recommencing at 1.10 pm.**

## **9. MDC Update - Alan Johnson, Jono Underwood, Steffi Henkle**

- Jono Underwood, MDC Biosecurity Manager gave an update on the Mediterranean Fanworm (on behalf of Liam Falconer, Senior Biosecurity Officer). See **Appendix B**.
- The Marine Biosecurity Toolbox is a 5 year (2019-24) research programme aimed at protecting New Zealand's marine environments from the impacts of non-indigenous species. The programme is jointly funded by the New Zealand Ministry of Business Innovation and Employment (MBIE) and a unique group of science, Māori, regulatory and industry organisations. See link below:
  - <https://www.biosecurity-toolbox.org.nz/research/>
- Steffi Henkel, Environmental Scientist Water Quality gave a presentation on recreational water quality.

See **Appendix C**.

- Alan advised that because a number of members were absent today, there will be more in-depth discussion of the review of SAG at the next meeting.
- Comments from the group regarding the SAG review:
  - Clr Odie would like to see the name changed from Environmental Issues to Resource Management.
  - Monyeen would like a representative from Havelock.
  - Need clear guidelines about who represent who and what community group they will umbrella.
  - Clr Odie agreed that not all areas need to part of the group and too many people.
  - Clr Faulls would like a timeframe on getting comments back from members about the SAG review so the comments can be added to the next SAG agenda. Comments to be back by the end of April.

**Jono Underwood left the meeting at 1.40 pm. Steffi Henkel left the meeting at 1.50 pm. Dave Hayes left the meeting at 2.05 pm.**

## **10. Community/Industry Representatives Update – SAG Members**

### **Central Pelorus – Lynley Perkins**

- Lynley reported that there have been a lot of local tourists this season.

### **Queen Charlotte Residents Association – Monyeen Wedge**

- Monyeen requested that Jodi Miline (MPI) be invited to speak at the next meeting about the Southern Scallop Strategy and would like to see Marlborough Salmon be put on the agenda this year.
- The issues which interest the members most are pest control and wilding pine control and there has been increases in people taking part in this type of control themselves.

### **Port Underwood Residents Association – Ken Roush**

- Wayne Boustridge was appointed new chairman at the AGM. Ken will stay on as local SAG representative.
- Clr Taylor thanked Ken for the work he has done for the Association.

### **Kenepuru & Central Sounds Residents Association – Ross Withell**

- Clr Taylor would like an update from Gina Ferguson, Consents & Compliance Group Manager at the next meeting, regarding The Portage's lack of maintenance.

### **Duncan Bay Residents Association – Linda Booth**

- Clr Faulls advised that Linda Booth will be standing down from the Association; however she will continue her role with SAG.

### **Moetapu Residents Association (Mahau Sound, Outward Bound) – Vic Koller**

- The community would like to build a community jetty in Motapu Bay. Currently they going through the process of raising money.

### **Ned Wells**

- New float design for exposed waters. This will be in Tasman Bay first. Testing of the plastic floats recycled for winery posts is going well.

### **Dates for 2021 meetings**

- 17 May
- 9 August
- 15 November

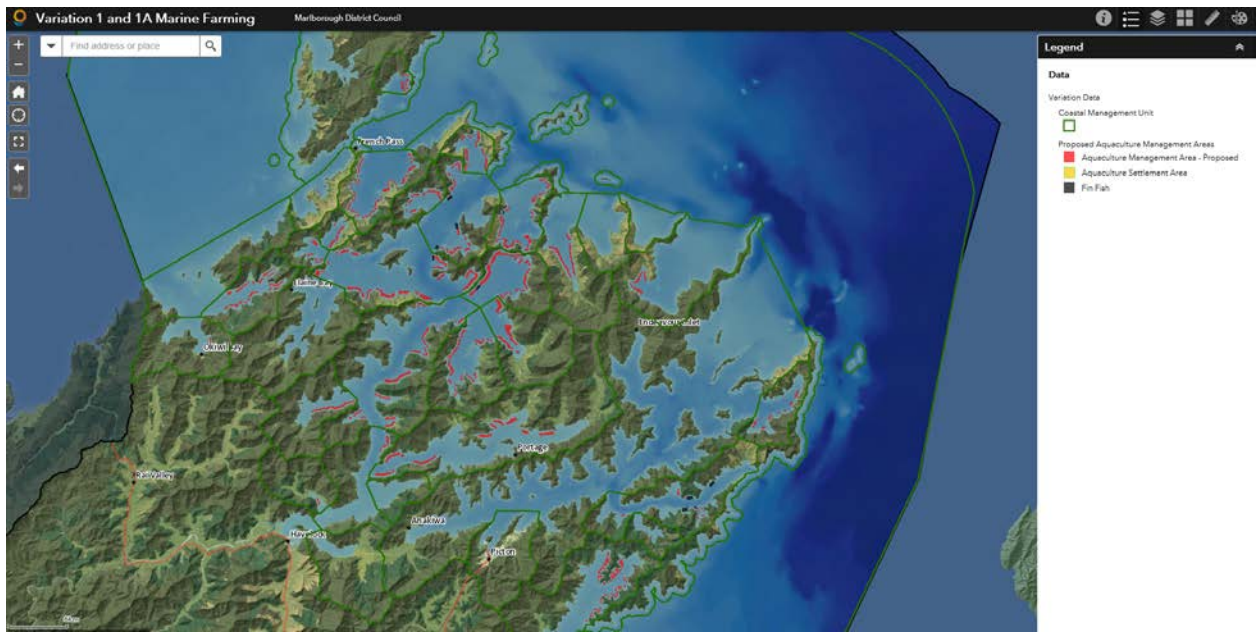
The meeting closed at 2.25 pm.

Action	Person Responsible
1. Jodi Milne (MPI) to update SAG on MPI notifications online	Alan - Jodi
2. Jodi Milne to talk about the Southern Scallop Strategy	Alan - Jodi
3. Impacts of the NPS for fresh water	Pere Hawes
4. Report on lack of maintenance at The Portage Wharf	Gina Fergusson
5. Review of SAG (Feedback from members regarding the SAG review to Alan by the end of April)	Alan Johnson
6. Invite Mike Bell to next SAG meeting	Ned Wells

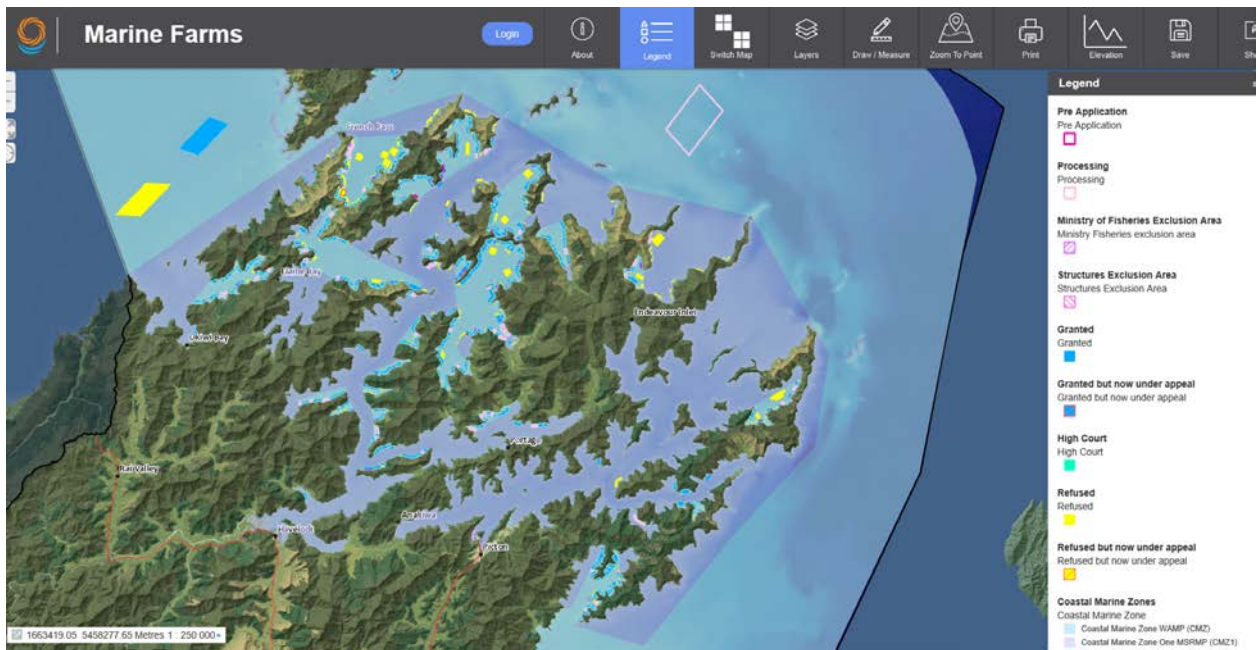


# Appendix A

## Smart Maps



<https://maps.marlborough.govt.nz/smaps/?map=6af1f32120314f569f780dafba2647cf>



**Appendix B**

**Mediterranean Fanworm**



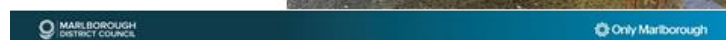
**MARLBOROUGH DISTRICT COUNCIL**

## Mediterranean Fanworm programme update

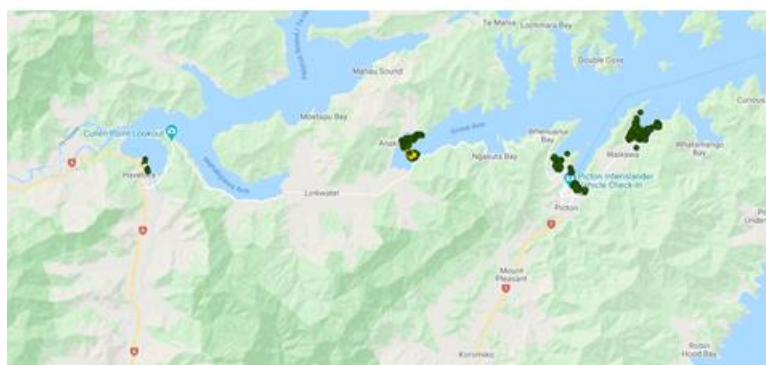
Liam Falconer  
Senior Biosecurity Officer, Operations Lead

### Affected users

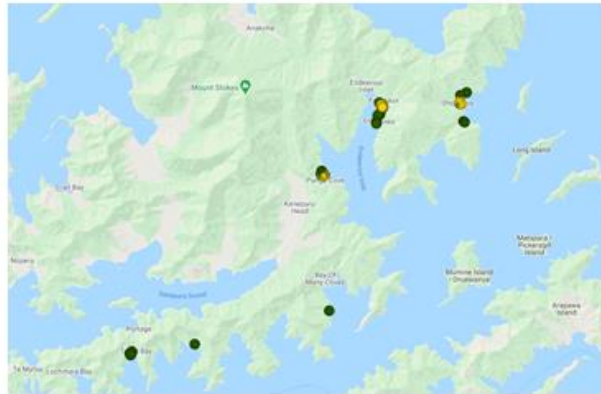
- Marine farming
- Vesselowners
- Ports
- Marinas
- Recreational users
- Seabed communities



### Twice-annual Fanworm Surveillance



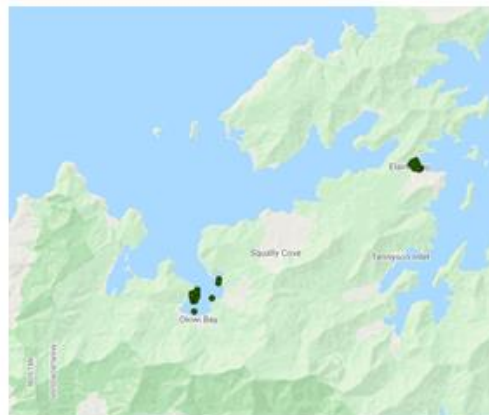
## Annual Fanworm Surveillance



## Twice-annual Fanworm Surveillance



## Annual Fanworm Surveillance





## Fanworm Surveillance - effort



## Fanworm Detections 2020/2021

- One Sabella detected this season, linked to a previous incursion in the Grove Arm
- Extensive delimitating survey has taken place with no other fanworm found
- No new incursions this season



## Source of infestations

- Majority of our Fanworm finds can be linked to Auckland or the upper north infestations
- These Councils are very proactive with their advertising and engagement with vessel owners.



## Screening arrivals to marinas

- Marlborough Marinas notify Council of any vessels arriving from high risk ports
- At risk vessels identified by marinas are assessed and snorkelled by the Biosecurity team to confirm presence or absence of Fanworm



## Screening arrivals to marinas

- Marlborough Marinas have their own 6 in 1 rule, vessel must be antifouled within 6 months or washed within 1 month to help prevent establishment of Fanworm.



## TOS Partnership Summer Survey

- No vessels with Fanworm detected in Marlborough
- One vessel found in Anchorage, Abel Tasman with Fanworm on board heading for Marlborough Sounds to clean their hull
- Vessel had been checked by divers before leaving Auckland





# MARINE BIOSECURITY TOOLBOX

Kia tirotiro mangōpare, arā ko ngā tai e whā  
Look through the eyes of the mangōpare,  
observing in all directions



**Protect** - Artificial structures associated with ports, marinas and coastal urban centers (e.g. pontoons, pilings and breakwalls) are often the sites where marine non-indigenous species first become established. This research theme will develop eco-innovative tools for protecting high-risk infrastructure, including novel surface treatment technologies for sustained biofouling prevention and substrates to enhance native populations to achieve ‘invasion resistance’.

**Detect** - Early detection of new incursions is critical to effective biosecurity management. This theme will enhance our ability to monitor for the presence and distribution of marine pest species using molecular sampling tools. It will also help develop the next generation of biosecurity practitioners by taking marine pest monitoring to New Zealand’s classrooms and equipping citizen-science programmes with field-operable molecular kits for pest detection.



## PROTECT

Artificial structures associated with ports, marinas and coastal urban centres (e.g. pontoons, pilings and breakwalls) are often the sites where marine non-indigenous species first become established. This research theme will develop eco-innovative tools for protecting high-risk infrastructure, including novel surface treatment technologies for sustained biofouling prevention and substrates to enhance native populations to achieve ‘invasion resistance’.

[FIND OUT MORE](#)



---



## DETECT

Early detection of new incursions is critical to effective biosecurity management. This theme will enhance our ability to monitor for the presence and distribution of marine pest species using molecular sampling tools. It will also help develop the next generation of biosecurity practitioners by taking marine pest monitoring to New Zealand’s classrooms and equipping citizen-science programmes with field-operable molecular kits for pest detection.

[FIND OUT MORE](#)






  
**MANAGE & RESPOND**

Movements of ships, boats, maritime equipment and infrastructure are principal pathways for the spread of non-indigenous marine species. This research theme will develop a network-based epidemiological transport model of New Zealand's maritime system. The model will be used to help us understand the strength and dynamics of invasion pathways and enable the development of optimised strategies for prevention and incursion response.

[FIND OUT MORE](#)




---

  
**ECONOMICS & DECISION-SUPPORT**

Improved marine biosecurity will significantly benefit New Zealand's economy, environment and society. This theme will develop an integrated bio-economic model to assess the costs and broader benefits of mitigating marine pest impacts through biosecurity measures developed across the research programme. This integrated approach, encompassing economic, ecological, social and cultural impacts, will inform appropriate delivery of intervention strategies.

[FIND OUT MORE](#)



 **MARILBOROUGH DISTRICT COUNCIL**  **Only Marilborough**

**Manage and Respond** - Movements of ships, boats, maritime equipment and infrastructure are principal pathways for the spread of non-indigenous marine species. This research theme will develop a network-based epidemiological transport model of New Zealand's maritime system. The model will be used to help us understand the strength and dynamics of invasion pathways and enable the development of optimised strategies for prevention and incursion response.

**Economics and Decision Support** - Improved marine biosecurity will significantly benefit New Zealand's economy, environment and society. This theme will develop an integrated bio-economic model to assess the costs and broader benefits of mitigating marine pest impacts through biosecurity measures developed across the research programme. This integrated approach, encompassing economic, ecological, social and cultural impacts, will inform appropriate delivery of intervention strategies.

## Future Challenges



252 additional berths in Waikawa

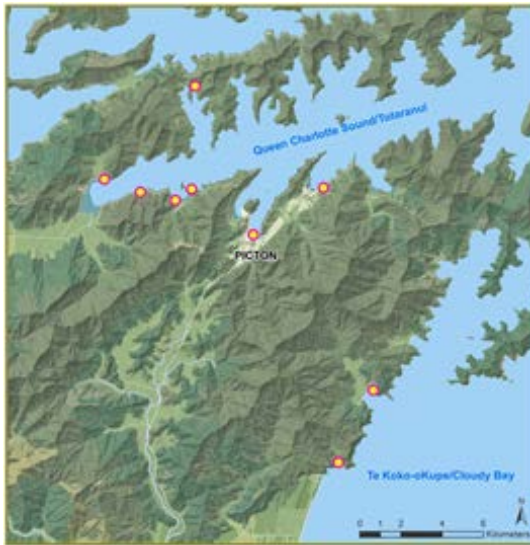
## Future Challenges



Vessels returning or visiting Marlborough after the America's Cup



**Appendix C**  
**Water Quality**



**Monitoring**

**10 coastal beaches**  
(Okiwi Bay not on map)

**Weekly sampling over the summer**  
November to March

**Indicator bacteria**  
Enterococci

Only Marlborough

**Guidelines**

Mode	Coastal Enterococci/100mL	Meaning
Green Mode	<140	Safe for contact recreation
	140	Alert Guideline
Alert Mode	140 - 280	Increased risk for health
	280	Action Guideline
Action Mode	>280	Unsafe for contact recreation

MARLBOROUGH DISTRICT COUNCIL

Only Marlborough

**Results – last season**

**Majority of samples in Green Mode**

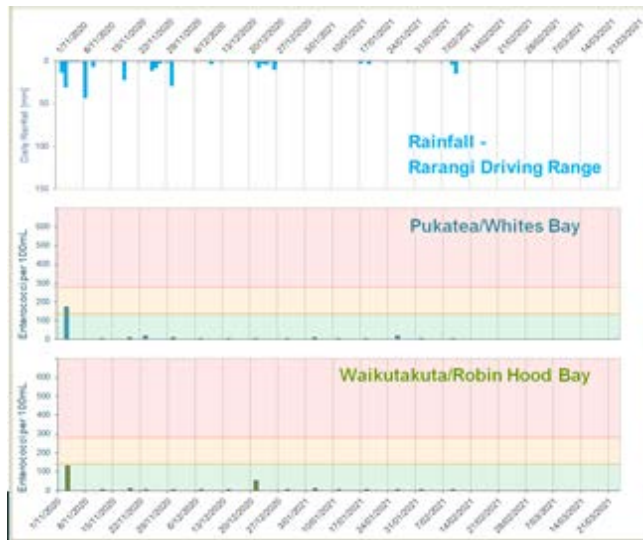
Exceedances of Guidelines mostly during **rainfall** (wet start to the season)

Dry weather exceedances at some sites



MARLBOROUGH DISTRICT COUNCIL

Only Marlborough



## Results – this season

Again rainfall caused high Enterococci in November

Low Enterococci during the rest of the season so far

Only Marlborough

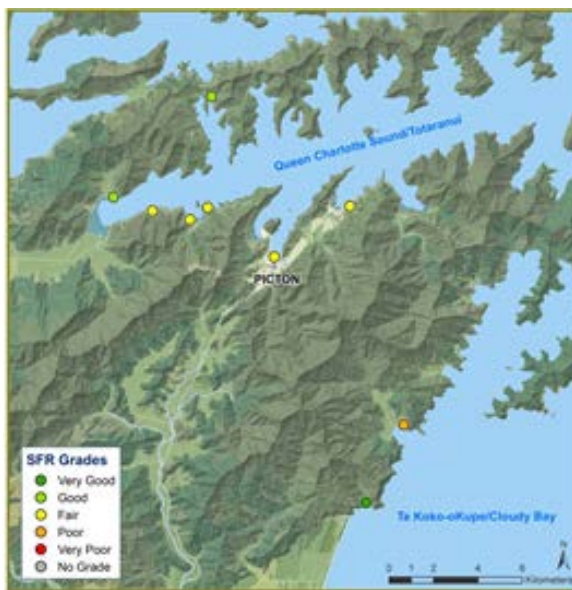
## SFR Grades

Use data over 5 summers and a site assessment

SFR Grade	Meaning
Very Good	Considered satisfactory for swimming at all times.
Good	Satisfactory for swimming most of the time with exceptions following rainfall.
Fair	Generally satisfactory for swimming. Caution should be taken during periods of high rainfall and swimming avoided if water is discoloured.
Poor	Swimming should be avoided, particularly by the very young, the very old and those with compromised immunity.
Very Poor	Generally swimming is not recommended.

MARLBOROUGH DISTRICT COUNCIL

Only Marlborough



## SFR Grades

Most sites are graded as **Fair**

Robin Hood only site graded Poor

Only Marlborough